

Transportation Applications Team

The transportation applications team focuses on diagnostic and prognostic tools to detect and anticipate threats to the transportation sector. We address both ground transportation and aviation needs. Among our chief activities is a road-hazards system. Current efforts are focused on diagnosing whether road temperatures are subfreezing for assessing the likelihood of accumulating snow/ice (Fig. 1).

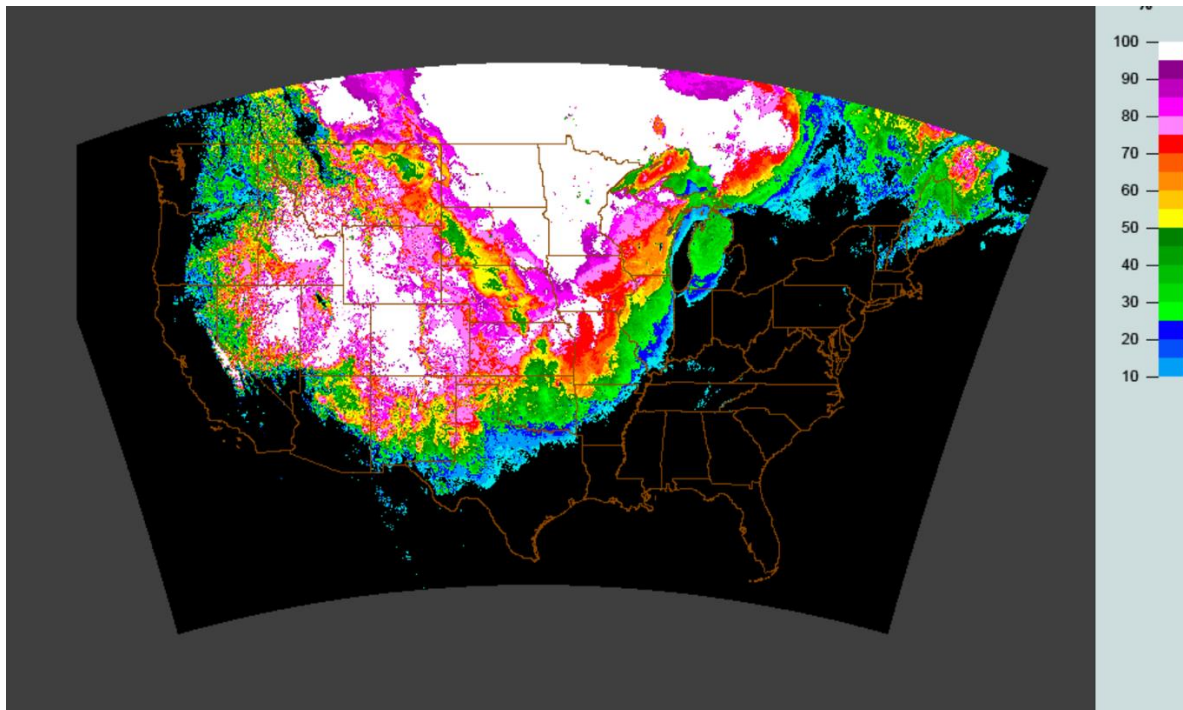


Figure 1: A 1-hr forecast of the probability that the road temperatures are subfreezing.

Other primary activities are the development of a surface hydrometeor phase diagnosis, development of a radar mosaic over the Caribbean Sea, assessment of uncertainty in mosaicked reflectivity, and development of tools to assess the density of falling snow.

For further information, please contact Heather Reeves (heather.d.reeves-1@ou.edu)

Team Members

Alex Eddy

Shawn Handler

Dr. Heather Reeves

Dr. Andrew Rosenow